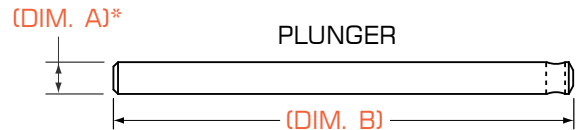




**SEAL GLAND ASSEMBLY**

PLUNGER DIAMETER (DIM. A)\*

4	1/4" PLUNGER
6	3/8" PLUNGER
8	1/2" PLUNGER



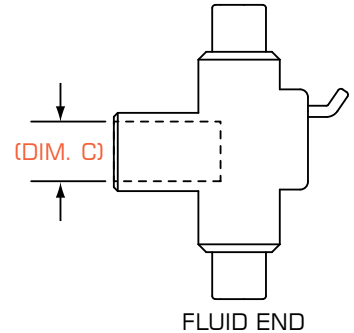
\* (DIM. A) TAKEN FROM WET END OF PLUNGER

PLUNGER LENGTH (DIM. B)

A	3-5/8" (MCI 2301/3401 ELECTRIC)
B	6.0" (5100 SERIES)
C	6.75" (4300/1200 SERIES)

GLAND HOUSING DIAMETER (DIM. C)

6	3/4" DIAMETER
7	7/8" DIAMETER
8	1.0" DIAMETER



PART #: Z - [ ] - [ ] - [ ]

**SECONDARY CONTAINMENT ADAPTOR BODY (without seal gland)**



B	5100 SERIES (FITS 6.0" PLUNGER LENGTH)
C	4300/1200 SERIES (FITS 6.75" PLUNGER LENGTH)

PART #: Z - SC - [ ]